



PROJECT DEVELOPER FORUM

Completeness Check - Timeline & Capacity

15 October 2010

Dorothy DENIS
Project Developer Forum
Manager, CO₂ Operations, ORBEO

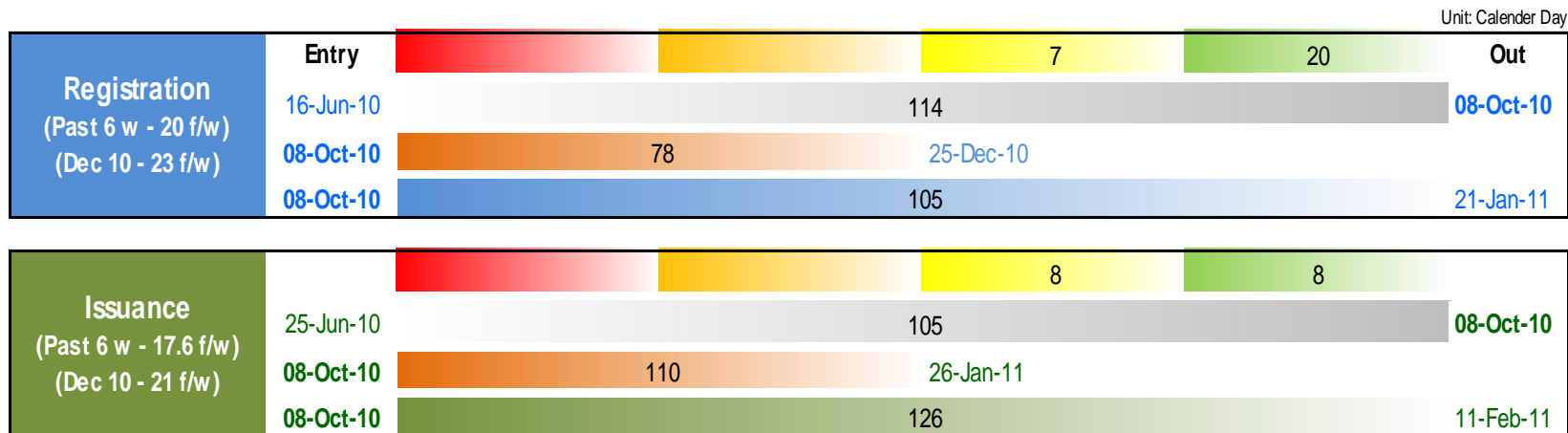
Table of Contents

- What has PD Forum done for Completeness Check
- **CC Timeline & Capacity**
 - The Statistics of CC Timelines
 - Capacity of CC Reviewers
 - CER Issuance Status & Forecast
 - Suggestions for Improvement
- **Incompleteness Notes**
 - The Database of Incompleteness
 - Major or Minor Issues?
 - Quality of the Project or Not?
 - Incompleteness v.s. Capacity & Timeline

What has PD Forum done for CC

- **Statistics of CC Timelines**
 - Based on UNFCCC web info
 - From Sep-2009 to 20-Jun-2010
 - After 21-Jun-2010
- **Database for Incompleteness Notes**
 - Collective data from PD Forum members
 - Before & after 21-Jun-2010

CC Timelines - Current Status

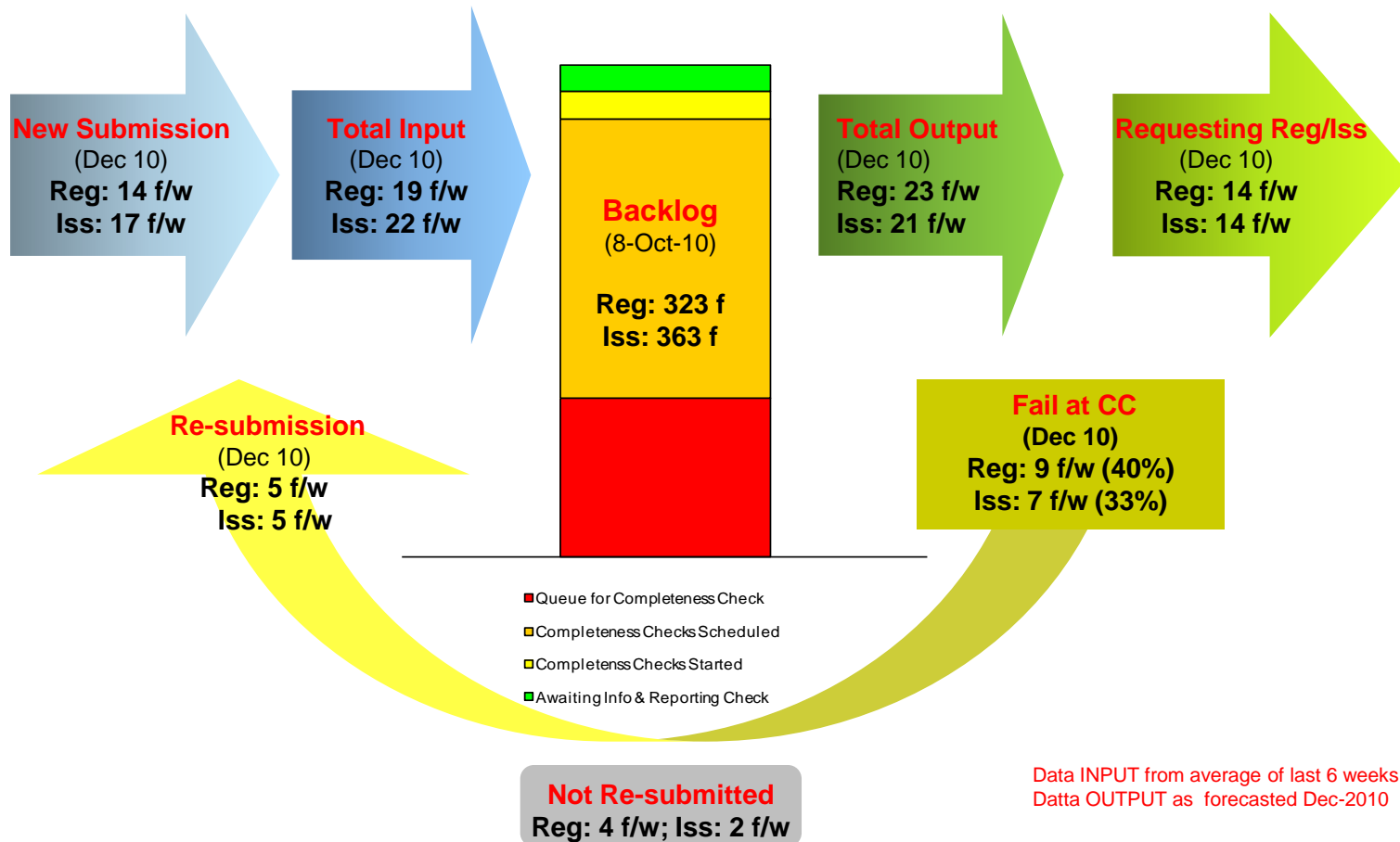


Resource: ORBEO Statistics, as of 8/10/2010

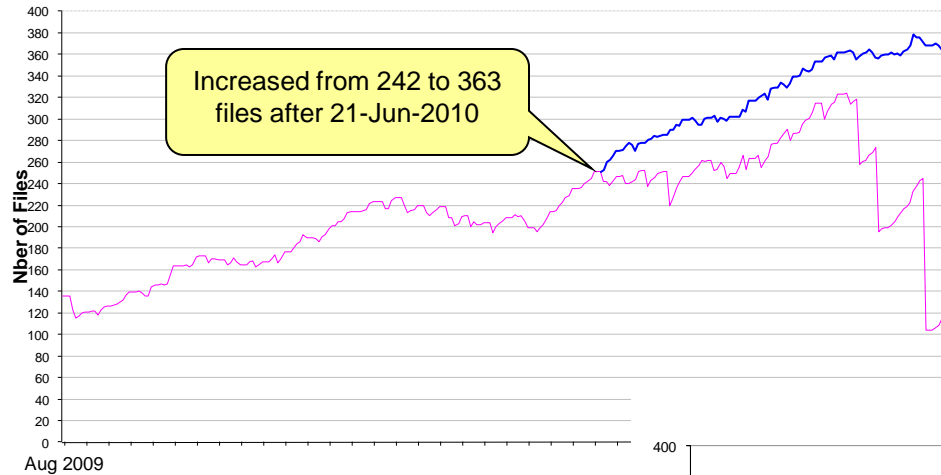
Backlog = Awaiting Scheduling + CC Scheduled
CC Processing = CC Started + Awaiting I&R Check

Working Capacity of CC Reviewers

CC Capacity totally imbalanced
Current CC scheduling guarantees worst outlooks in near future



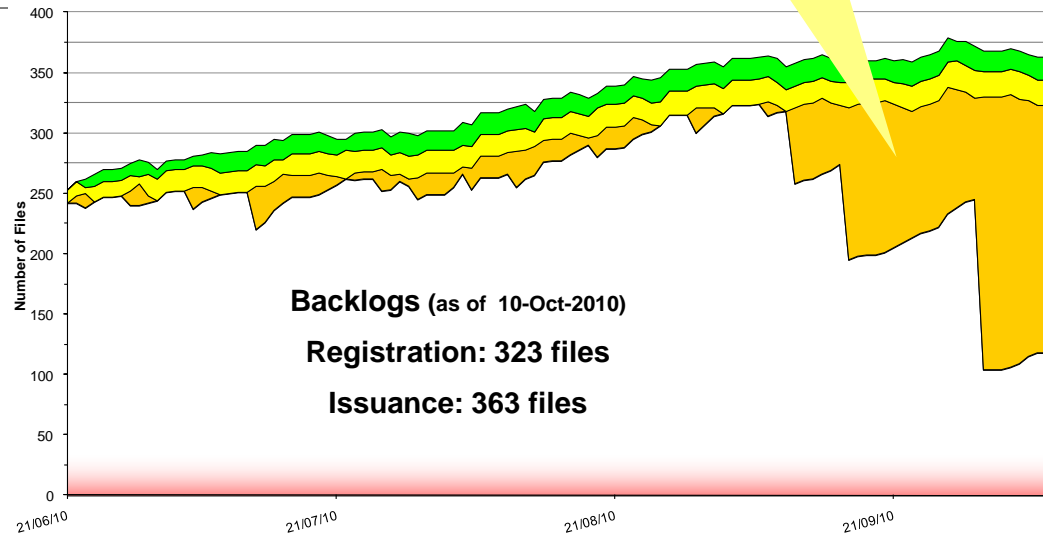
CC Backlog - Issuance



The new CC procedure from 21-Jun-2010 does not improve the process efficiency

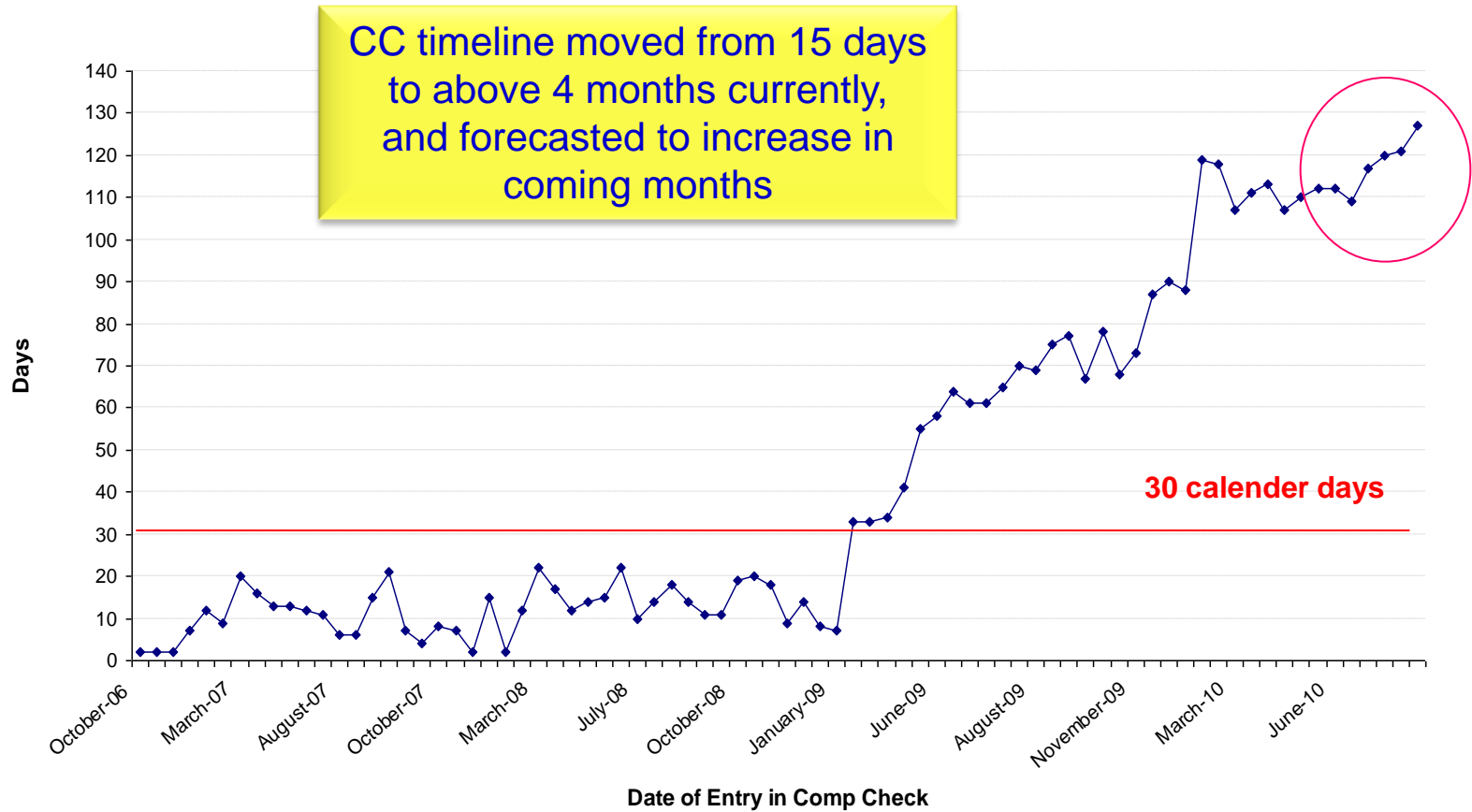
Planning of CC is only changing box, still in the backlog.

CC Review Capacity
(Forecasted Dec 10)
Registration: 21-24 files/week
Issuance: 21 files/week



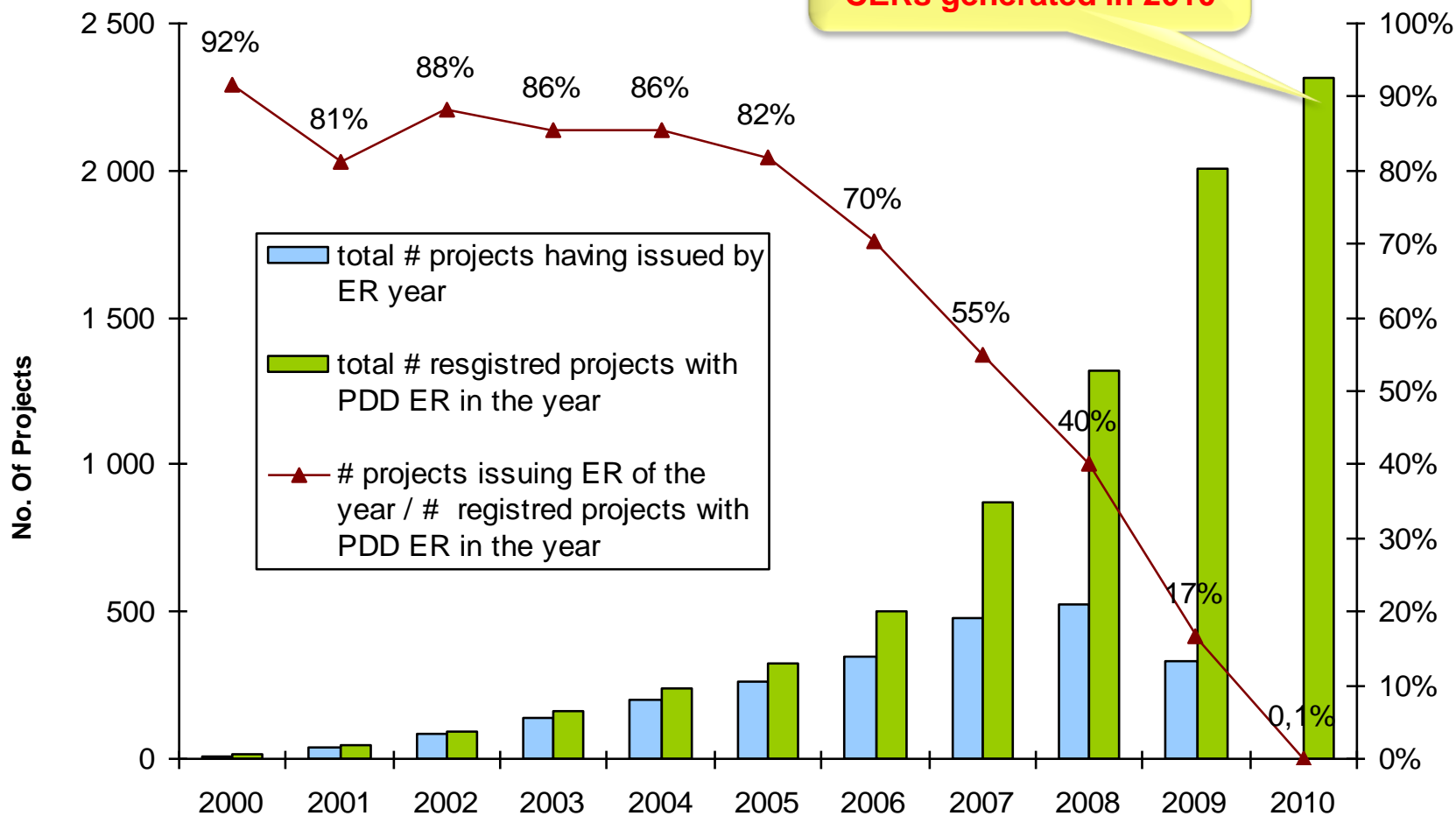
CC Timeline

- Issuance Requests from the Same CDM Project



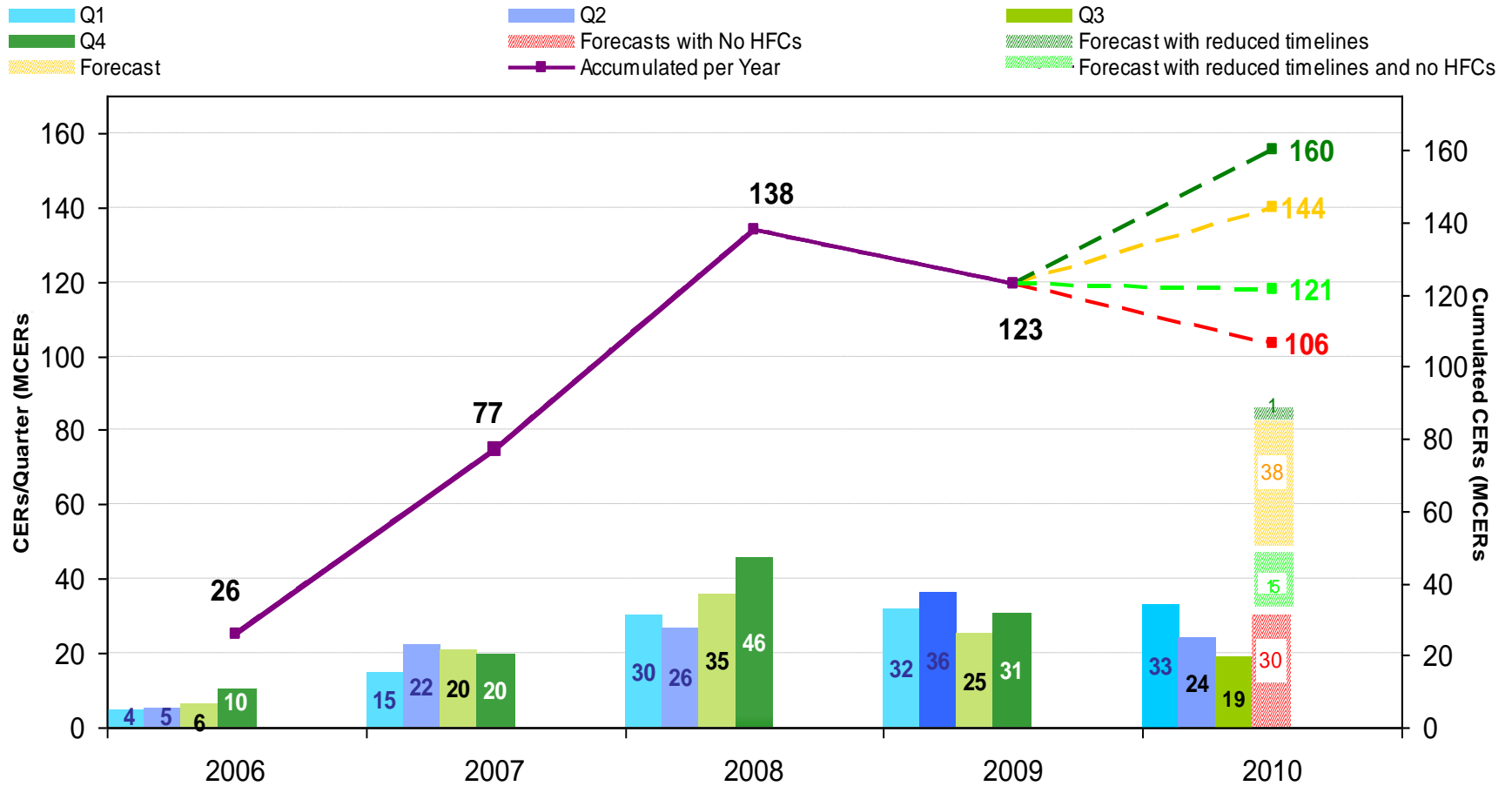
Issuance Process is far too long and Continue to Increase...

Only 2 Projects issued CERs generated in 2010



Source: IGES CDM Project Database (updated on 1-Sep-2010)

Impact of CC Timeline to CER Issuance



CER volume based on submitted Monitoring Reports in UNFCCC website

Digesting the CC Backlogs

CC Review Capacity needs to be doubled in Q1-2011, at least !!

Completeness Check Pipe - Registration

In = 19 f/w = 15 new + 4 re-sub

Out: 23 f/w

Out: 23 f/w

Out: 40 f/w

	Weeks	In	Out	Queue		Weeks	In	Out	Queue	
08/10/2010				323					323	
15/10/2010	1	19	-23	319		1	19	-23	319	
22/10/2010	2	19	-23	315		2	19	-23	315	
29/10/2010	3	19	-23	311		3	19	-23	311	
05/11/2010	4	19	-23	307		4	19	-23	307	
12/11/2010	5	19	-23	303		5	19	-23	303	
19/11/2010	6	19	-23	299		6	19	-23	299	
26/11/2010	7	19	-23	295		7	19	-23	295	
03/12/2010	8	19	-23	291		8	19	-23	291	
10/12/2010	9	19	-23	287		9	19	-23	287	
17/12/2010	10	19	-23	283		10	19	-23	283	
24/12/2010	11	19	-23	279		11	19	-23	279	
31/12/2010	12	19	-23	275	11,96	12	19	-23	275	11,96
07/01/2011	13	19	-23	271	84	13	19	-40	254	84
14/01/2011	14	19	-23	267	24/03/2011	14	19	-40	233	24/03/2011
21/01/2011	15	19	-23	263		15	19	-40	212	
28/01/2011	16	19	-23	259		16	19	-40	191	
04/02/2011	17	19	-23	255		17	19	-40	170	
11/02/2011	18	19	-23	251		18	19	-40	149	
18/02/2011	19	19	-23	247		19	19	-40	128	
25/02/2011	20	19	-23	243		20	19	-40	107	
04/03/2011	22	19	-23	239		21	19	-40	86	
11/03/2011	22	19	-23	235		22	19	-40	65	
18/03/2011	23	19	-23	231		23	19	-40	44	
25/03/2011	24	19	-23	227		24	19	-40	23	
01/04/2011	25	19	-23	223	9,70	25	19	-40	2	0,05
08/04/2011	26	19	-23	219	68	26	19	-19	2	1
15/04/2011	26	19	-23	215	07/06/2011	26	19	-19	2	02/04/2011

Completeness Check Pipe - Issuance

In = 22 f/w = 17 new + 5 re-sub

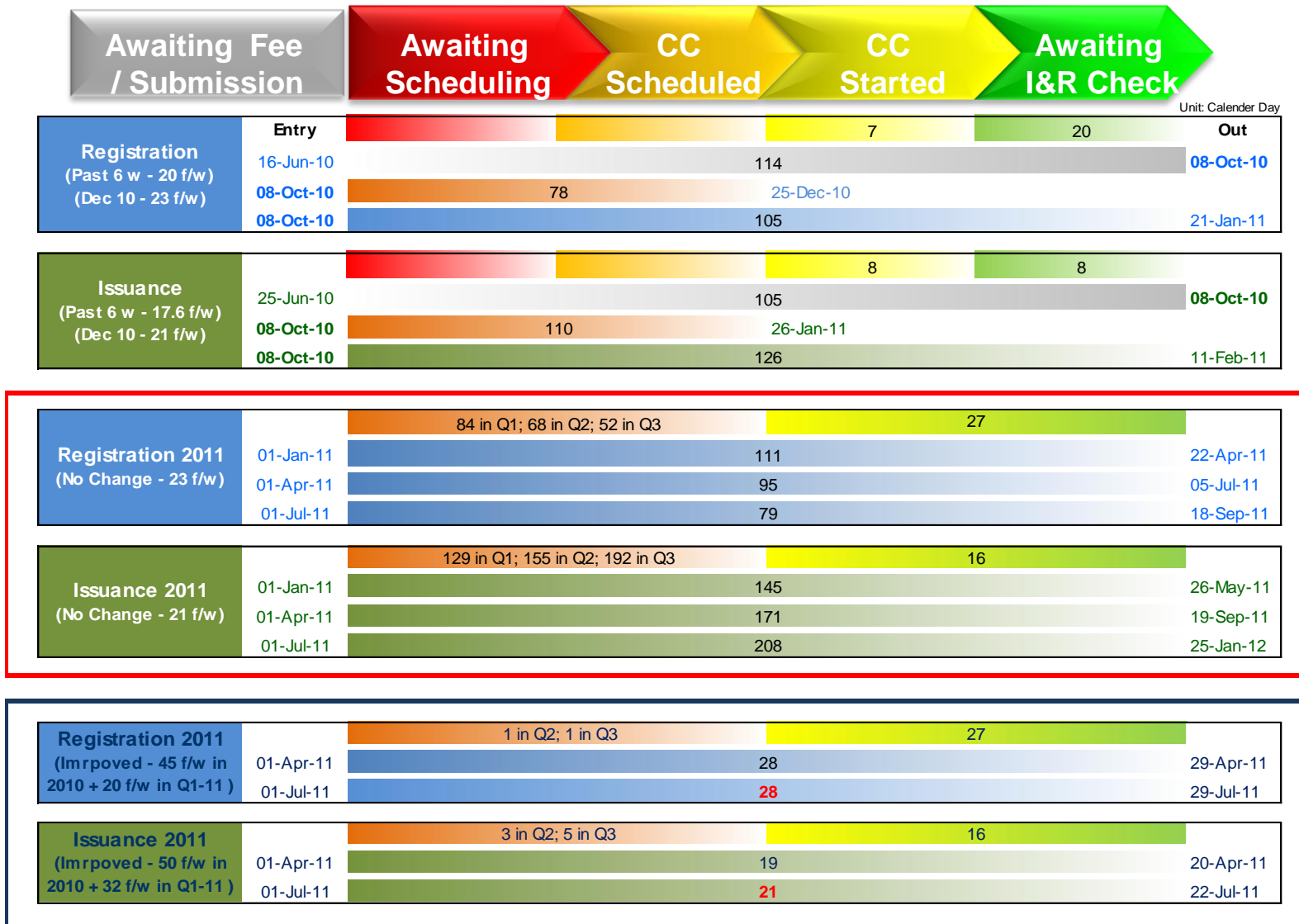
Out: 21 f/w

Out: 21 f/w

Out: 55 f/w

	Weeks	In	Out	Queue		Weeks	In	Out	Queue	
				363					363	
1	22	-21	364		1	22	-21	364		
2	22	-21	365		2	22	-21	365		
3	22	-21	366		3	22	-21	366		
4	22	-21	367		4	22	-21	367		
5	23	-21	369		5	23	-21	369		
6	23	-21	371		6	23	-21	371		
7	23	-21	373		7	23	-21	373		
8	23	-21	375		8	23	-21	375		
9	24	-21	379		9	24	-21	379		
10	24	-21	382		10	24	-21	382		
11	24	-21	385		11	24	-21	385		
12	24	-21	388	18,50	12	24	-21	388	18,50	
13	25	-21	393	129	13	25	-55	359	129	
14	25	-21	397	09/05/2011	14	25	-55	329	09/05/2011	
15	25	-21	402		15	25	-55	300		
16	25	-21	406		16	25	-55	270		
17	27	-21	412		17	27	-55	242		
18	27	-21	418		18	27	-55	214		
19	27	-21	424		19	27	-55	186		
20	27	-21	429		20	27	-55	157		
21	28	-21	436		21	28	-55	130		
22	28	-21	443		22	28	-55	103		
23	28	-21	450		23	28	-55	76		
24	28	-21	458		24	28	-55	50		
25	29	-21	466	22,19	25	29	-55	24	0,44	
26	29	-21	475	155	26	29	-29	24	3	
27	29	-21	483	03/09/2011	27	29	-29	24	04/04/2011	

When can the CC to be completed?



Resource: ORBEO Statistics, as of 8/10/2010

When can a New CDM Project deliver?

- **At Current Capacity** (1st Monitoring Period = 6 months)
 - Submitting for Registration on **8-Oct-2010**
 - Needs **703 days (min.)** to expect the 1st CER delivery on **9-Sep-2012**
 - 105 (CC-R) + 28 (RR) + 180 (monitoring period) + 90 (DoE Verification) + 265 (CC-I) + 28 (RI) + 7 (adm for issuance)
 - Submitting on **1-Jan-2011**
 - Needs **745 days (min.)** to expect the 1st CER delivery **on 15-Jan-2013**
 - 111 (CC-R) + 28 (RR) + 180 (monitoring period) + 90 (DoE Verification) + 301 (CC-I) + 28 (RI) + 7 (adm for issuance)
 - Submitting on **1-Apr-2011**
 - Needs **760 days (min.)** to expect the 1st CER delivery **on 30-Apr-2013**
 - 95 (CC-R) + 28 (RR) + 180 (monitoring period) + 90 (DoE Verification) + 333 (CC-I) + 28 (RI) + 7 (adm for issuance)
- **With Suggested Capacity** (1st Monitoring Period = 6 months)
 - Submitting on **1-Jan-2011**
 - Needs **483 days (min.)** to expect the 1st CER delivery on **8-Apr-2012**
 - 32 (CC-R) + 28 (RR) + 180 (monitoring period) + 90 (DoE Verification) + 17 (CC-I) + 28 (RI) + 7 (adm for issuance)
 - Submitting on **1-Apr-2011**
 - Needs **380 days (min.)** to expect the 1st CER delivery on **14-Apr-2012**
 - 34 (CC-R) + 28 (RR) + 180 (monitoring period) + 90 (DoE Verification) + 17 (CC-I) + 28 (RI) + 7 (adm for issuance)
 - Submitting on **5-Mar-2012**
 - Needs **391 days (min.)** to expect the 1st CER delivery on **31-Mar-2013**
 - 28 (CC-R) + 28 (RR) + 180 (monitoring period) + 90 (DoE Verification) + 17 (CC-I) + 28 (RI) + 7 (adm for issuance)

CER has no value to meet the compliance deadline on 31/03/2013, requested by EU ETS

Lastest date of submission for a new CDM project with valuable CERs in 2012

At Current Capacity: 7-Mar-2011 With Suggested Capacity: 5-Mar-2012

Suggestions for Improvement (Option 2)

Capacity of CC Reviewers is the KEY !!!

- for Improving the CC Timelines

- for Keeping CDM as a valuable tool to the market

PD Forum Suggests to

Increase CC Review Capacity

- Q1-2011

- Registration:
Output= 40 files/week
- Issuance:
Output= 55 files/week

Maintain CC Review Capacity

- From Q2-2011

- Registration: Output = Input
- Issuance: Output = Input

At Current Capacity:

The new CDM project submit after 7-Mar-2011 will have no market value!